



HEALTH PROFILE 2015

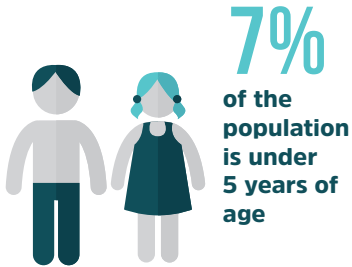
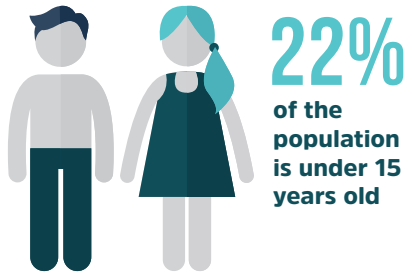
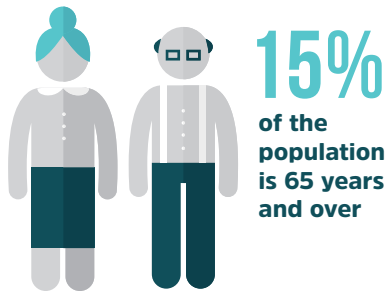
DID YOU KNOW?



BIRTHS IN 2014



POPULATION (2013 Census)



TERRITORIAL AUTHORITIES

- Thames - Coromandel
- Hauraki
- Waikato (part)
- Matamata - Piako
- Hamilton City
- Waipa
- Otorohanga
- South Waikato
- Waitomo
- Ruapehu (part)

Males live to around **80** years

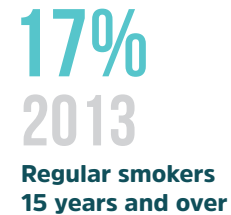
Females live to around **84** years

19% of households are single parent

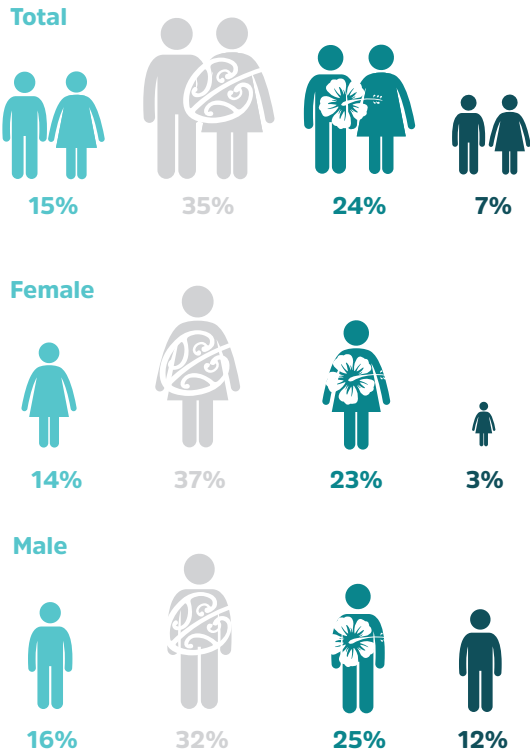
10% of the population live in crowded housing

28% (0-14 years) of the population live in the most deprived areas (9 and 10 NZ Dep)

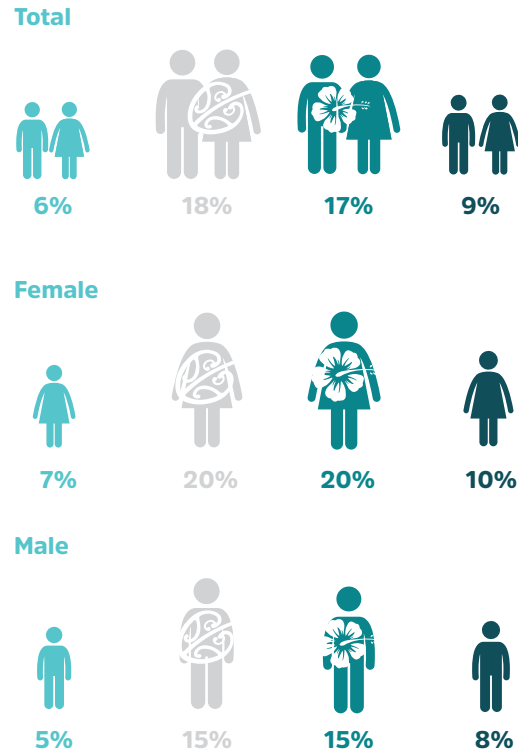
SMOKING



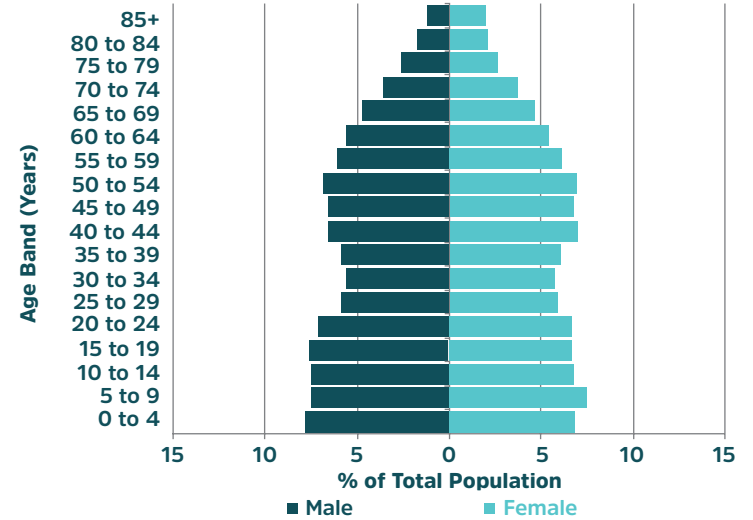
Percentage of regular smokers within Waikato DHB by ethnicity. 2013 Census.



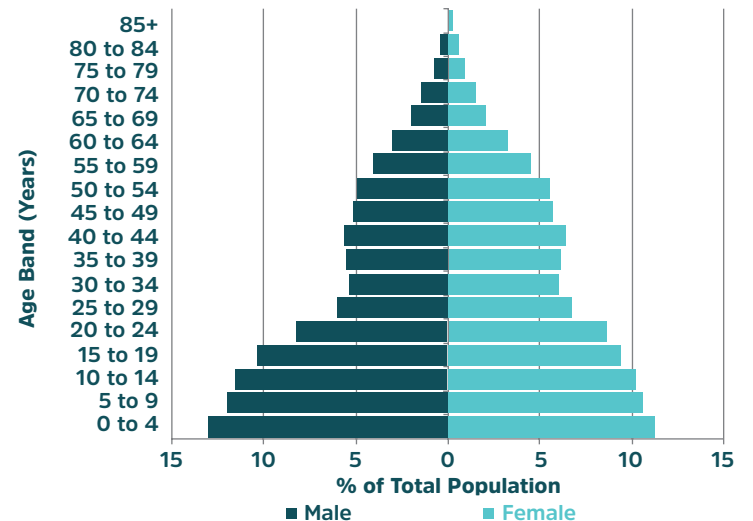
Percentage of unemployed people within Waikato DHB by ethnicity. 2013 Census



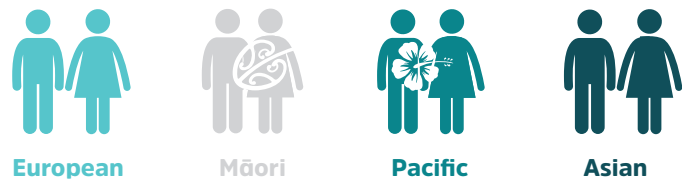
Population Age Structure - Waikato DHB (2013 Census)



Population Age Structure - Māori Waikato DHB (2013 Census)



POPULATION KEY

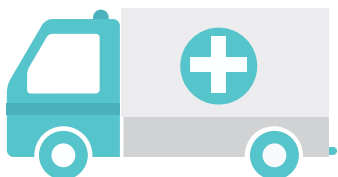


*Definition: People aged 15 years and over are defined as employed if they worked for one hour or more for pay or profit, or without pay in a family farm, business or professional practice, or if they had a job but were not at work for some reason.

HOSPITALISATIONS AND DISEASE

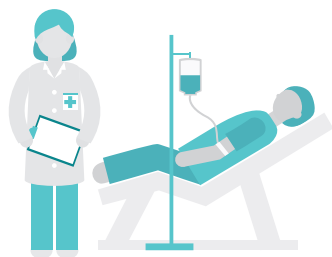
1 IN 4

visit the emergency department each year



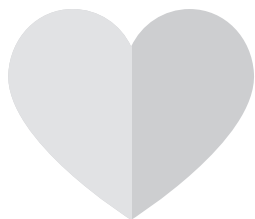
1 IN 4

is admitted to hospital each year



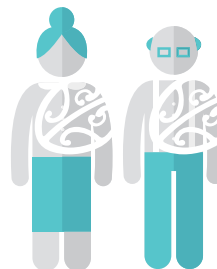
The most common
CHRONIC DISEASE

hospitalisations are ischaemic heart disease (IHD), chronic obstructive pulmonary disease (COPD), heart failure, type 2 diabetes, and stroke.



Most common among

**MĀORI 65+
= COPD AND TYPE 2 DIABETES**



**3 OUT OF 1,000
WOMEN 45+
are hospitalised for
BREAST CANCER**
each year



**1 IN 100
MĀORI ADULTS
admitted for conditions
RELATED TO
ALCOHOL**



**MĀORI AGED 45+
HAVE 4 TIMES
HIGHER RATES OF
TYPE 2 DIABETES
AND COPD**

hospitalisations



**MĀORI
aged 45-64 years have
7 TIMES
HIGHER
rates for
HEART FAILURE**
than non-Māori



**3 OUT OF 1,000
MĀORI ADULTS**
are hospitalised for
SCHIZOPHRENIA
EACH YEAR



Admissions for
**MOOD
DISORDER**
are seen in
**2 OUT OF
1,000 PEOPLE**



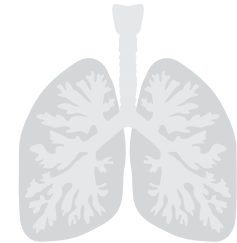
**1 IN 100
CHILDREN**
have been hospitalised
for dental caries



DENTAL CARIES
hospitalisations are
**50% MORE COMMON IN
MĀORI CHILDREN**
than Non-Maori children



**2 IN 100
CHILDREN**
admitted to hospital for
respiratory infections
each year



5 OUT OF 1,000 CHILDREN
are hospitalised for
GASTROENTERITIS
EACH YEAR



**1 IN 2 PREGNANT WOMEN
ARE OVERWEIGHT OR OBESE
DURING PREGNANCY**

(BMI over 25)



IN 2026

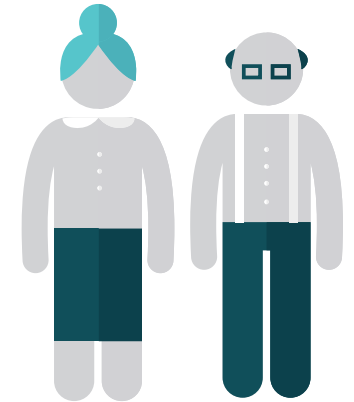
The population of
WAIKATO DHB
will
INCREASE
BY 5%



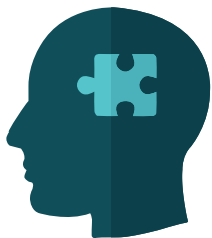
UNDER 15s
will
DECREASE
BY 2%



65+
will
INCREASE
BY 33%



The prevalence of
DEMENTIA IN 65+
is estimated to
INCREASE BY
60%



Admissions for
CHRONIC DISEASE
is estimated to
INCREASE
BY 20%



BREAST CANCER
admissions
IN 45+
are estimated to
INCREASE
BY 12%



Admissions for
MOOD DISORDER
and
SCHIZOPHRENIA
are estimated to
INCREASE BY
5%



WAIKATO DHB KEY HEALTH INDICATOR STATISTICS

Key health indicator statistics for Waikato DHB (total and Māori population) 2014.

Health indicators	Waikato DHB		Māori		Māori vs non-Māori
	Rate	Time trend since 2006	Rate	Time trend since 2006	Rate ratio
In-patient events per 1,000 population ¹	260.0	↑ Increase	260.3	≈ No change	1.02
Emergency department visits per 1,000 population ²	265.4	-	348.2	-	1.44
Mortality rate per 1,000 population ³	7.2	-	5.3	-	-
Dementia, total with disease ⁴	4,303	-	366	-	0.4
<i>Hospital stays per 100, 000 population⁵</i>		-			
IHD					
45-64 years	566.0	≈ No change	708.1	≈ No Change	1.31
65+ years	1856.4	↓ Decrease	1658.1	≈ No Change	0.89
COPD					
45-64 years	353.9	↑ Increase	971.8	≈ No Change	3.92
65+ years	1555.0	≈ No change	4758.7	≈ No Change	3.60
Diabetes type 2					
45-64 years	356.3	≈ No change	1173.6	≈ No Change	5.44
65+ years	1019.2	≈ No change	2901.8	≈ No Change	3.30
Heart failure					
45-64 years	150.4	≈ No change	568.0	≈ No Change	7.28
65+ years	1129.2	≈ No change	2680.3	≈ No Change	2.64
Stroke					
45-64 years	190.0	≈ No change	442.9	≈ No Change	3.02
65+ years	969.6	≈ No change	1300.4	≈ No Change	1.38
Renal failure					
45-64 years	50.9	≈ No change	79.8	≈ No Change	1.74
65+ years	205.3	≈ No change	340.7	≈ No Change	1.75

Health indicators	Waikato DHB		Māori		Māori vs non-Māori
	Rate	Time trend since 2006	Rate	Time trend since 2006	Rate ratio
Breast cancer, women 45+ years	292.5	≈ No change	424.4	≈ No change	1.55
Mood disorder ⁶	157.5	≈ No change	132.3	↓ Decrease	1.11
Schizophrenia ⁶	130.2	≈ No change	289.0	≈ No change	4.21
Disorders due to psychoactive substance use ⁶	86.7	↓ Decrease	111.9	↓ Decrease	1.44
Intentional self-harm ⁷	149.4	↑ Increase	160.2	↑ Increase	1.04
Alcohol related harm and conditions ⁸	717.6	-	1058.4	-	-
Respiratory infections aged 0-14 years ⁹	2033.9	↑ Increase	3011.2	↑ Increase	1.91
Asthma aged 0-14 years ¹⁰	431.3	↑ Increase	623.5	≈ No change	1.84
Gastroenteritis aged 0-14 years ¹¹	535.5	↑ Increase	416.7	≈ No change	0.70
Dental caries aged 0-14 years ¹²	1041.0	↑ Increase	1369.9	↑ Increase	1.55
Rheumatic fever ¹³	5.1	≈ No change	20.2	≈ No change	6.68
<i>Community care service use per 1,000 population¹⁴</i>					
District nursing	286.4	-	253.4	-	0.87
Public health nursing	19.2	-	41.6	-	3.13
Physio-/occupational therapy/dietician	38.9	-	31.8	-	0.79

Notes: 1-2 Waikato DHB hospital register Costpro, events per 1,000 population, 2014. 3 Events per 1,000 population, 2013. 4 Alzheimer's New Zealand. 5 Age- and ethnicity specific rates, annual average 2010-2014, Costpro. ICD10: ischemic heart disease (IHD) I20-25, chronic obstructive pulmonary disease (COPD) J40-44, J47, diabetes type 2 E11, heart failure I50, stroke I60-I69, renal failure N17-N19, breast cancer C50, 6 Age- and ethnicity-standardised rate per 100,000 population. Standardised to the NZ population. Mood disorder F30-F39, schizophrenia and delusional disorders F20-F29, disorders due to psychoactive substance use, F10-F19. 7 Age- and ethnicity-standardised rate per 100,000 population, ICD10 X60-X84. Standardised to the NZ population, 8 Alcohol attributable fraction weighted admissions, 9 Age- and ethnicity-specific rate per 100,000 population, ICD10 J00-J22, 10 Age- and ethnicity-specific rate per 100,000 population, ICD10 J45-46, 11 Age- and ethnicity-specific rate per 100,000 population, ICD10 A00-A09, 12 Age- and ethnicity-specific rate per 100,000 population, ICD10 K02, 13 Crude rate per 100,000 population, ICD10 I00-I02, 14 Events per 1,000 population, 2011-2014 (annual average), Costpro. Arrows show statistically significant differences over time (p<0.05) - Data not available for comparison. Rate ratios: non-Māori is held as reference category. A ratio above/below 1 means the outcome is more/less common among Māori than non-Māori. A rate ratio in bold font indicate that there is a statistically significant difference between Māori and non-Māori.

WAIKATO DHB KEY HEALTH INDICATOR STATISTICS

Key socioeconomic indicator statistics for Waikato DHB (total and Māori population), 2013.

Indicators	Waikato DHB		Māori		Māori vs non-Māori
	Rate	Time trend since 2006	Rate	Time trend since 2006	Rate ratio
Risk behaviours¹					
Regular smokers (15+)	17.2%	↓ Decrease	35.1%	↓ Decrease	2.58
Male	17.8%	↓ Decrease	32.7%	↓ Decrease	2.18
Female	16.5%	↓ Decrease	37.1%	↓ Decrease	3.03
Regular smokers (15 to 24)	18.1%	↓ Decrease	31.3%	↓ Decrease	2.30
Male	19.0%	↓ Decrease	30.0%	≈ No change	2.00
Female	17.2%	↓ Decrease	32.5%	↓ Decrease	2.65
Smoking in pregnancy	18.7%	-	38.4%	-	4.71
Births to mothers under age 19 per 1,000 births ²	66.4	-	134.5	-	4.51
Births to mothers over age 35 per 1,000 births ²	166.1	-	110.9	-	0.57
Overweight in pregnancy (BMI 25-29) ²⁻³	28.1%	-	28.7%	-	1.03
Obese in pregnancy (BMI ≥30) ²⁻³	25.5%	-	34.5%	-	1.67
Social and economic¹					
Rates of te reo in the home (among Māori)	-	-	25.7%	↓ Decrease	-
Highest qualification: diploma (level 5) and over	25.2%	↑ Increase	14.9%	↑ Increase	0.54
No qualification (15+)	25.0%	↓ Decrease	36.6%	↓ Decrease	1.62
Unemployed (percentage of population in labour force)	7.7%	↑ Increase	17.5%	↑ Increase	3.05
Living in crowded housing	9.7%	-	-	-	-
Do not own usual residence	50.6%	↑ Increase	74.4%	↑ Increase	1.64
Rented households	37.3%	↑ Increase	-	-	-
Households with no access to telecommunications	2.1%	↓ Decrease	-	-	-
Households with no access to a motor vehicle	7.1%	≈ No change	-	-	-
Single parent households	19.0%	≈ No change	-	-	-
Living in high deprivation areas ³	26.3%	↑ Increase	-	-	-

Notes: 1 2013 Census, 2 2014 National Maternity Collection, MoH, 3 Based on maternal height and weight at first registration with LMC or DHB Primary Maternity Service, 4NZDEP13 index scores of 9 or 10. Arrows show statistically significant differences over time (p<0.05) - Data not available for comparison. Rate ratios: non-Māori is held as reference category. A ratio above/below 1 means the outcome is more/less common among Māori than non-Māori. A rate ratio in bold font indicate that there is a statistically significant difference between Māori and non-Māori.

WAIKATO DHB PROJECTIONS 2026

Current and projected population and health statistics for Waikato DHB, 2016-2026.

Indicator	Estimated <i>n</i> 2016	Estimated <i>n</i> 2026	Change <i>n</i>	2016-2026 %
Population estimates¹				
Total population	374,560	392,355	17,795	4.8%
Under 15	80,755	79,290	-1,465	-1.8%
Over 65	59,720	79,275	19,555	32.7%
Hospital admissions (<i>n</i>)				
IHD, 45+	1,494	1,799	305	20.4%
COPD, 45+	1,142	1,402	259	22.7%
Diabetes type 2, 45+	861	1,028	166	19.3%
Heart failure, 45+	733	924	191	26.1%
Stroke, 45+	685	847	163	23.7%
Mood disorder	561	588	27	4.8%
Schizophrenia	461	483	22	4.8%
Gastroenteritis, 0-14	414	407	-8	-1.8%
Asthma, 0-14	815	800	-15	-1.8%
Breast cancer (women, 45+)	220	248	27	12.4%
Dementia², prevalence 65+				
	4,300	6,866	2,565	59.7%

Notes: Projections based on Statistics NZ population projections by sex and age, 2016(base)-2026, medium projection. Estimated admissions 2026 = current number of admissions (annual average 2010-2014) multiplied with the (age-specific) increase/decrease in population. 1 Population estimations for 2016. 2 Number with dementia in 65+ (prevalence 8.1%) based on a 2012 Alzheimer's NZ report. Projection for 2030, prevalence 8.7%.