

Pēpuere/February 2020

Public Health Bulletin

Welcome to Kathryn

Tēnā koutou katoa. I'm Kathryn Carppe, the new Registered Nurse at the Public Health Unit. I joined the unit in November 2019 after working in a variety of, largely community based settings, most recently I was the public health nurse for the Paeroa/Hauraki Plains area. My role here at the Public Health Unit is largely communicable disease focussed, however, I also work alongside the CNS on the refugee and migrant health screening service.

MMR Catch up campaign announced

You may have seen the government announcement that it will fund MMR catch up activities via DHBs this year, focusing on people younger than 30 years. So far the only new detail is the national level of funding, but we already know there are planned changes to the national immunisation schedule in July and October this year. The Waikato DHB is keen to close the immunity gap and achieve equity, so look out for opportunities to participate in our plans once we have sufficient detail to plan, fund, and implement them!

COVID-19 Novel Coronavirus

Case numbers of COVID-19 continue to escalate within Mainland China, with a minority of cases reported across many other countries.

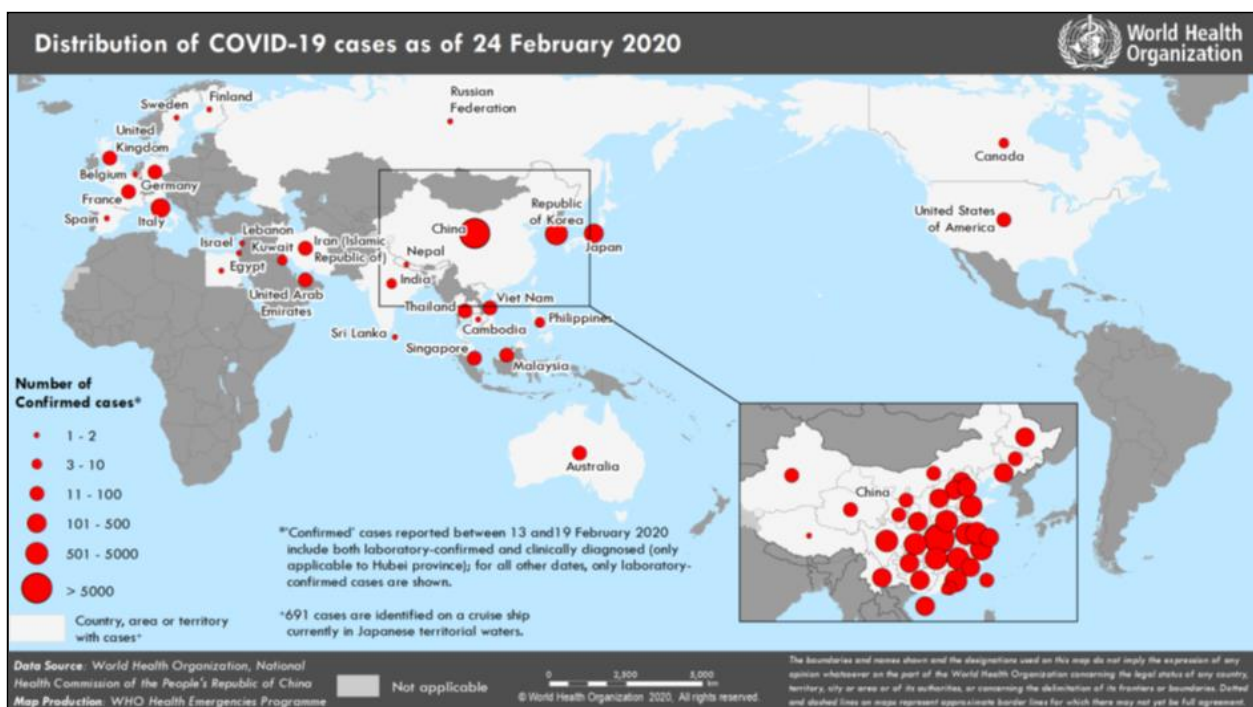
Please keep yourselves up to date at this link: <https://www.health.govt.nz/our-work/diseases-and-conditions/novel-coronavirus-covid-19>

The current case definition is here: <https://www.health.govt.nz/our-work/diseases-and-conditions/novel-coronavirus-covid-19/novel-coronavirus-resources-health-professionals>

There are also guides for primary care, infection prevention and control, and self-isolation.

Please note that the case definition currently requires BOTH epidemiological and clinical criteria to be met before the patient can be notified, investigated, and managed as a suspected case.

Communications to primary care as the situation develops will be via Damian Tomic.



Notifiable diseases – January 2020 compared to January 2019 (Waikato DHB)

Disease name	Waikato ¹				YTD		
	2019	2020	Change	2019-2020	Waikato	National	% ²
Campylobacteriosis	88	71	-17	▼	71	680	10
Cryptosporidiosis	2	2	0	-	2	33	6
Dengue fever	1	1	0	-	1	14	7
Gastroenteritis / foodborne intoxication	9	3	-6	▼	3	25	12
Giardiasis	8	20	12	▲	20	146	14
Hepatitis A	1	0	-1	▼	0	4	0
Invasive pneumococcal disease	1	0	-1	▼	0	35	0
Latent tuberculosis infection	1	0	-1	▼	0	17	0
Legionellosis	0	2	2	▲	2	30	7
Leptospirosis	1	3	2	▲	3	11	27
Listeriosis	0	1	1	▲	1	7	14
Lead Absorption	1	0	-1	▼	0	no data	-
Measles	11	0	-11	▼	0	9	0
Mumps	1	2	1	▲	2	66	3
Pertussis	27	1	-26	▼	1	40	3
Rheumatic fever - initial attack	1	3	2	▲	3	13	23
Salmonellosis	15	8	-7	▼	8	93	9
Shigellosis	0	3	3	▲	3	30	10
Tuberculosis disease - new case	2	1	-1	▼	1	25	4
Tuberculosis disease - relapse or reactivation	0	1	1	▲	1	2	50
VTEC/STEC infection	9	7	-2	▼	7	81	9
Yersiniosis	3	9	6	▲	9	111	8

¹Number of cases. Source: Waikato DHB.

²Waikato YTD count as a proportion of national data.

Medical Officers of Health: Felicity Dumble – Richard Wall – Richard Vipond – Richard Hoskins

After hours:

MOoH: 021 359 650

HPO: 021 999 521

If there is no answer, please contact Waikato Hospital's switchboard 07 839 8899 and ask for the on-call MOoH.

During office hours:

Population Health (MOoH or HPO): (07) 838 2569

Notifications: 07 838 2569 ext. 22065 or 22020

Notifications outside Hamilton: 0800 800 977

Fax: 07 838 2382

Email: notifiablediseases@waikatodhb.health.nz

Previous Bulletins at: www.waikatodhb.health.nz/for-health-professionals/public-health-bulletins/