



News@theLibrary

Whiringa-ā-Rangi November 2024

Library Hours

Mon-Fri 8am-5pm

Sat noon-4pm

Library is closed on Sundays and public holidays

[Apply](#) for afterhours access

[Library Hub](#)

December drop in JP service in the Library

The last day this service will be available this year will be the 17 December.

December						
Su	M	Tu	W	Th	F	Sa
1	2	3	4	5	6	7
8	9	10	11	12	13	14
15	16	17	18	19	20	21
22	23	24	25	26	27	28
29	30	31				

JP services will resume on Tuesday 7 January 2025, noon until 1:15pm.

Contact the Library

Phone: 07 8398880

Ext: 98880

library@waikatodhb.health.nz

Inside this issue

- Changes to our library service
- Changes to your personal [Discovery account](#)
- [Athens accounts will expire in 2025](#)
- [Hypervigilant?](#) How to manage this at work
- [Retire without regrets](#)
- New and popular [ebooks](#)

Te Whatu Ora

Health New Zealand

Waikato

Changes to our library service

As of 1 January 2025 our library will become part of a network of local hospital based libraries across New Zealand.

The new Health New Zealand (HNZ) library service will have a single national library portal to access databases, journals and ebooks. Librarian services including sourcing articles and literature searches on topics, can be requested via the portal.

The HNZ library service will also oversee all physical library spaces and access to print books and journals in local hospital libraries.

Our new service will provide equity of access to online resources for all HNZ employees as well as providing New Zealand primary care providers with some access to online resources. In addition to this all HNZ employees will get access to another great point of care tool, BMJ Best Practice.

The best possible package of online resources has been collated within the constraints of a significant budget cut. The package of online resources has been endorsed by HNZ clinical leadership.

How will this impact your local Library services

Many of our online resources and work processes may alter with this move to a national library service. However, your local library team remains the same—Lyn, Andrea and Nicole, as does the Library location, hours, and print collection.

The link to the Library Hub on the [main intranet page](#) will continue to take you to your local, Waikato, library information.

The hub will look different in December as we transition to a new way of working. A quick link to the [library hub](#) you are familiar with will be available until the end of the year.

We will keep library customers informed about the changes to our service via our Library hub, newsletters, emails and general notices on the main intranet page.

Please [email the Library](#) or phone 07 839 8880 for more information.

Our core services will continue—but our library portal will look different.



3 Ways to Temper Your Hypervigilance at Work

Why this “scanning” behaviour develops—and how to overcome it.



Hypervigilance is a heightened state of awareness -
“it’s your brain’s way of protecting you by scanning the environment for danger.”

If this “scanning” gets stuck in overdrive you feel like you’re always “bracing for impact”- even if you are absolutely safe. *HBR*

[Request this article.](#)

Retire without regrets

Four keys to creating a satisfying post career life.

“One clear lesson emerged: It takes work to stop working. Leaving and crafting a fulfilling retirement takes thought, time and effort.” HBR



[Request this article](#) and discover ideas and exercises that you can use to help you navigate any major life change.

Te Whatu Ora
 Health New Zealand

Waikato

Change to personal Discovery accounts

The Library will transition to a new Discovery platform on January 1, 2025. Similar to the current version, you will be able to create an account to save searches, store search results, and set up email alerts.

IMPORTANT!

Do you currently have a Discovery account?

Please note that after 31 December 2024 your account and any saved searches and search results will no longer be available.

Recommended action for Discovery account holders:

Export your search results—login to your Discovery account, select results and export to Excel.

Discovery is a tool that allows you to search multiple online resources, providing a consolidated list of the most recent and relevant results. With an account, you can save your searches and results. Without an account, however, your searches and results will be lost once you close the webpage.



Athens accounts will expire in 2025

Do you have an Athens account? If you have an account please read the information below

You can continue to use your Athens account login to access our Waikato Library online resources until 31 December 2024 after this date our Athens portal will no longer be available. All Athens account holders will receive emailed information about this change

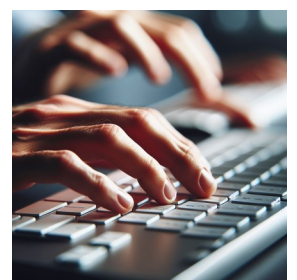
Health Professionals/Primary Health Providers (not Health New Zealand employees) -access to online resources

Our new national library service will be creating a portal for primary care health providers that will be effective across New Zealand. It is anticipated that the portal will be available in January 2025. We will contact you once the portal is functional with information on how to set up a new account.

Health New Zealand Te Whatu Ora employees—access to online resources onsite and offsite

From January 2025 you will be able to access online resources onsite and offsite via the national portal. You will no longer need to create an Athens account to access resources offsite.

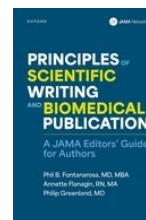
When you are offsite you will be able to access online resources using your work computer login and password. More information about accessing online resources will be available soon.



New and popular ebooks

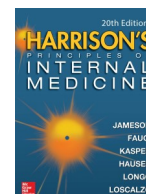
Principles of scientific writing and biomedical publication : a JAMA editors' guide for authors

"... practical, comprehensive, state-of-the-art guide designed to enhance understanding of the principles of scientific publication, promote improved writing and manuscript preparation skills, and help navigate the seemingly complex pathway from manuscript submission, through peer review and revision, to successful publication."



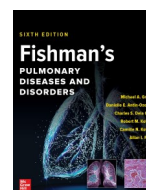
Harrison's Principles of Internal Medicine, 20e

"... classic textbook has retained enduring features that have distinguished it among medical texts—a sharp focus on the clinical presentation of disease, expert in-depth summaries of pathophysiology and treatment, and highlights of emerging frontiers of science and medicine..."



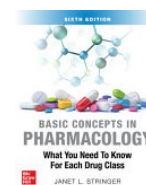
Fishman's Pulmonary Diseases and Disorders, 6e

"A presentation of pulmonary and critical care medicine with the underlying basic and applied science upon which the clinical material is based. The book includes relevant respiratory biology and underlying cellular and molecular mechanisms ..."



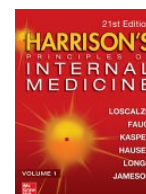
Basic Concepts in Pharmacology: What You Need to Know for Each Drug Class, 6e

The up-to-date content and proven study techniques you need to pass one of the most difficult courses in medical school



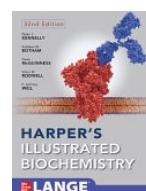
Harrison's Principles of Internal Medicine, 21e

"... presents a sharp focus on the clinical presentation of disease, expert in-depth summaries of pathophysiology and treatment, and includes highlights of emerging frontiers of science and medicine."



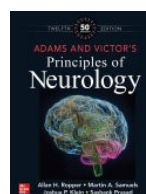
Harper's Illustrated Biochemistry, 32e

"... a concise survey of aspects of biochemistry most relevant to the study of medicine



Adams and Victor's Principles of Neurology, 12e

"... wise application of science, evidence from trials, and is closely coupled to the traditional value of the neurological history and examination—essentially the craft of neurology"



Sherris & Ryan's Medical Microbiology, 8e"

"... designed to be read comprehensively, not as a reference work. Considerable effort has been made to supplement this text with other learning aids such as the above-mentioned cases and questions as well as tables, photographs, and illustrations. This book is intended to be the primary text for students of medicine and medical science who are encountering microbiology and infectious diseases for the first time..."

